

Air Care & Mobile Care  
 Communication Center .....513-584-CARE (2273)  
 Outreach Coordinator ..... acmc-outreach@uchealth.com  
 Fax ..... 513-585-5010  
 Air Care EMS Follow-up ..... ACMC-Followup@uchealth.com  
 uchealth.com/aircare-mobilecare  
 facebook.com/aircareandmobilecare

Important Contact Information

Center for Emergency Care .....513-584-5700  
 Charge Nurse.....513-584-2630  
 Health Unit Coordinator .....513-584-8148  
 Social Work .....513-584-4201  
 Telemetry Line .....513-584-7760  
 EMS Coordinator ..... 513-584-EMSI (3671)  
 EMS Education requests ..... ems-training@uchealth.com  
 UC Health Patient Follow-up ... emsfollowup.uchealth.com

UC Medical Center  
 234 Goodman St.  
 Cincinnati, OH 45219  
 uchealth.com



Services provided by:



Discover more  
 at [uchealth.com](https://www.uchealth.com)

UC Health  
 IN SCIENCE LIVES HOPE.



UC Health  
 Air Care & Mobile Care

2021 CALENDAR



## Air Care & Mobile Care

UC Health Air Care & Mobile Care has been the region’s most comprehensive air and ground medical transport program for 36 years. While most transport programs bring the patient to the Level I Trauma Center; Air Care & Mobile Care brings UC Medical Center’s Level I Trauma Center – and its Comprehensive Stroke Center and cardiac and burn services - to the patient. The program provides air transport and three levels of ground transport (mobile intensive care, advanced life support or basic life support). We are also the only service in the region to be accredited in all four levels of medical transport by the Commission on Accreditation of Medical Transport Systems (CAMTS) – the highest standard in measuring medical transport services. Safety is our primary core value at Air Care & Mobile Care. Helicopters are operated by Metro Aviation, Inc.

## Important Contact Information

### Air Care & Mobile Care

Communication Center ..... 513-584-CARE (2273)  
Outreach Coordinator ..... acmc-outreach@uhealth.com  
Fax ..... 513-585-5010  
Air Care EMS Follow-up ..... acmc-followup@uhealth.com  
uhealth.com/aircare-mobilecare  
facebook.com/aircareandmobilecare

### Center for Emergency Care

Center for Emergency Care ..... 513-584-5700  
Charge Nurse..... 513-584-2630  
Health Unit Coordinator ..... 513-584-8148  
Social Work ..... 513-584-4201  
Telemetry Line ..... 513-584-7760  
EMS Coordinator ..... 513-584-EMS1 (3671)  
EMS Education requests ..... EMS-TRAINING@uhealth.com  
UC Health Patient Follow-up: emsfollowup.uhealth.com

## Purpose

- To care for and transport patients safely, providing clinically excellent care and dignity.

## Mission

- To support the mission of UC Health by bringing the world-class care of UC Medical Center to the patient through advanced transport medicine.

## Vision

- To be the recognized world leader in transport medicine – the standard by which other programs are measured.

## Culture

- To demonstrate actions and behaviors that support our purpose through open communication, asking questions, professionalism, education, honesty, dedicated work and excellence.

## Values

- Safety – What is the safest way to accomplish a task or transport.
- Clinical Excellence – What is best for the patient.
- Financial Sustainability & Growth – Growing the program to support our patients.
- Community Service & Support – Educating and supporting the community to be safer and healthier.
- Industry Involvement as Leaders – Developing “best practice” in safety, clinical care and operations so that others may learn from us.

Saving lives, impacting lives for more than 36 years.

## Criteria for Helicopter Transport

Air medical transport is based on the patient’s acute problem factored with the elements of time, distance and the need for specialization.

### Communication Center

**Toll-Free**..... 800-826-8100

**Dispatch**..... 513-584-CARE (2273)

### Initial Information Needed

Description of situation:

- Landing zone location (cross street or highway route number).
- Pediatric or adult patient.
- Call sign of landing zone vehicle or officer.

### Setting Up a Landing Zone

**Size**.....100 ft. x 100 ft. or larger

**Surface**.....Flat

Use roadways, cut fields or asphalt areas. Avoid gravel and areas with sand or loose, dry soil. Identify, at least two, clear approach paths into the landing zone.

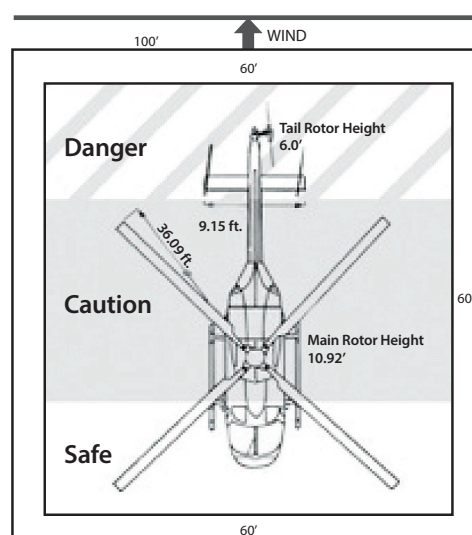
### Identify All Hazards in the Area

- Wires.
- Light poles.
- Towers.
- High-tension lines.

(Please note that structures less than 150 ft. are not required by law to have lights on them.)

### Walk the Landing Zone to Check for Hazards

- Loose items.
- Debris.
- Pieces of wood or metal.



### How to Mark the Landing Zone

- Strobe lights.
- Flares.
- Vehicles on the four corners.

### Landing Zone Security

Keep all personnel and bystanders at least 300 ft. from the landing zone. Rotor wash generates an 80 mph wind force.

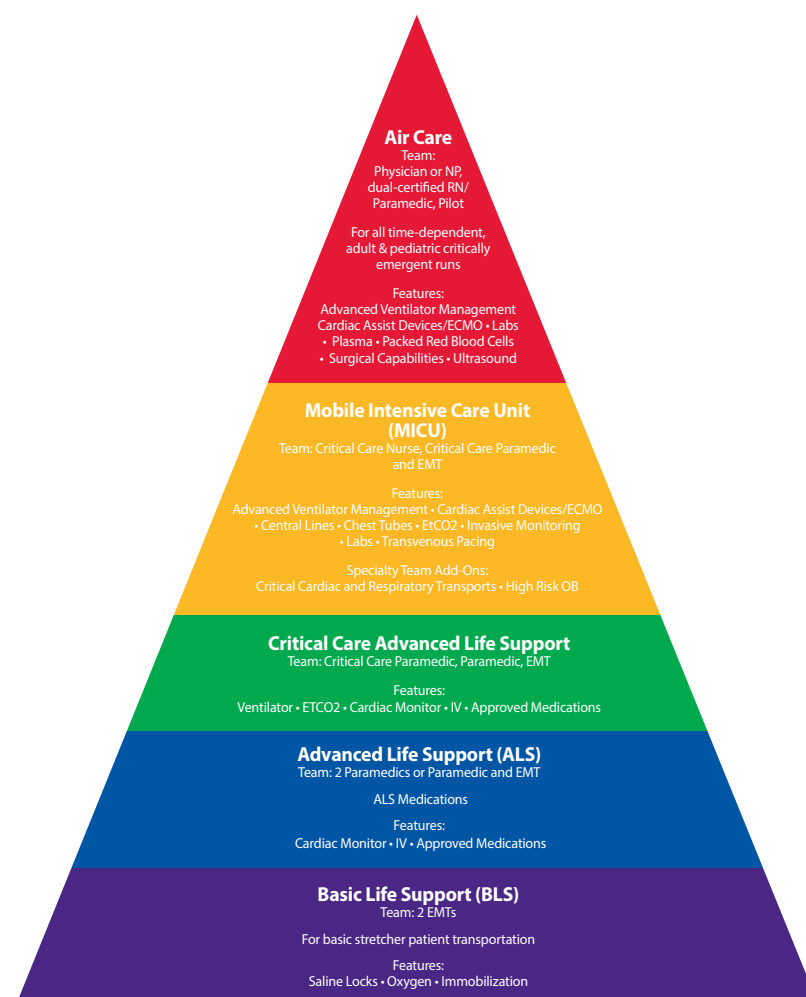
### Never Approach the Aircraft

If needed, you will be signaled to approach the aircraft.

## Transport Pyramid

UC Health Air Care & Mobile Care is the most comprehensive air and ground medical transport program in the region. Our primary purpose is to assist other healthcare providers, whether in a hospital or at the scene of the patient’s illness or injury, by providing prompt response and timely patient transport.

No matter how critical the need, our experienced professionals provide reliable, compassionate and high-quality care for your patients at a moment’s notice. Available 24 hours a day, our devoted team of emergency and critical care healthcare professionals make us one of the most experienced transport teams in the regions.







Critical care capabilities aboard every UC Health Air Care flight include four units of blood products, expert airway management, surgical capabilities, advanced diagnostics, including ultrasound and labs, complex ventilator management. Capable of transporting cardiac assist devices.

December 2020							February 2021						
S	M	T	W	T	F	S	S	M	T	W	T	F	S
6	7	8	9	10	11	12	7	8	9	10	11	12	13
13	14	15	16	17	18	19	14	15	16	17	18	19	20
20	21	22	23	24	25	26	21	22	23	24	25	26	27
27	28	29	30	31			28						

# January 2021

SUNDAY	MONDAY	TUESDAY	WEDNESDAY	THURSDAY	FRIDAY	SATURDAY
					New Year's Day 1	2
					1	2
3	4	5	6	7	8	Law Enforcement Appreciation Day 9
3	1	2	3	1	2	3
10	11	12	13	14	15	16
1	2	3	1	2	3	1
17	Martin Luther King Jr. Day 18	19	20	21	22	23
2	3	1	2	3	1	2
24	25	26	27	28	29	30
3						
31						
1	1	2	3	1	2	3





Photo Credit: Dan Manga

Three helicopters, operated by Metro Aviation, are strategically based throughout the tristate to quicken response times.

January 2021

S	M	T	W	T	F	S
					1	2
3	4	5	6	7	8	9
10	11	12	13	14	15	16
17	18	19	20	21	22	23
24	25	26	27	28	29	30
31						

February 2021

March 2021

S	M	T	W	T	F	S
	1	2	3	4	5	6
7	8	9	10	11	12	13
14	15	16	17	18	19	20
21	22	23	24	25	26	27
28	29	30	31			

SUNDAY	MONDAY	TUESDAY	WEDNESDAY	THURSDAY	FRIDAY	SATURDAY
	1 Groundhog Day	2	3	4	5 National Wear Red Day	6
	2	3	1	2	3	1
7	8	9	10	11	12	13
2	3	1	2	3	1	2
Valentine's Day 14	Presidents' Day 15	16	Ash Wednesday 17	Critical Care Transport Nurses Day 18	19	20
3	1	2	3	1	2	3
21	22	23	24	25	26	27
1	2	3	1	2	3	1
28						
2						





Air Care & Mobile Care flight and critical care ground nurses are all certified in emergency, critical care or transport nursing - bringing over 15 years of nursing experience to the patient.

February 2021

S	M	T	W	T	F	S
	1	2	3	4	5	6
7	8	9	10	11	12	13
14	15	16	17	18	19	20
21	22	23	24	25	26	27
28						

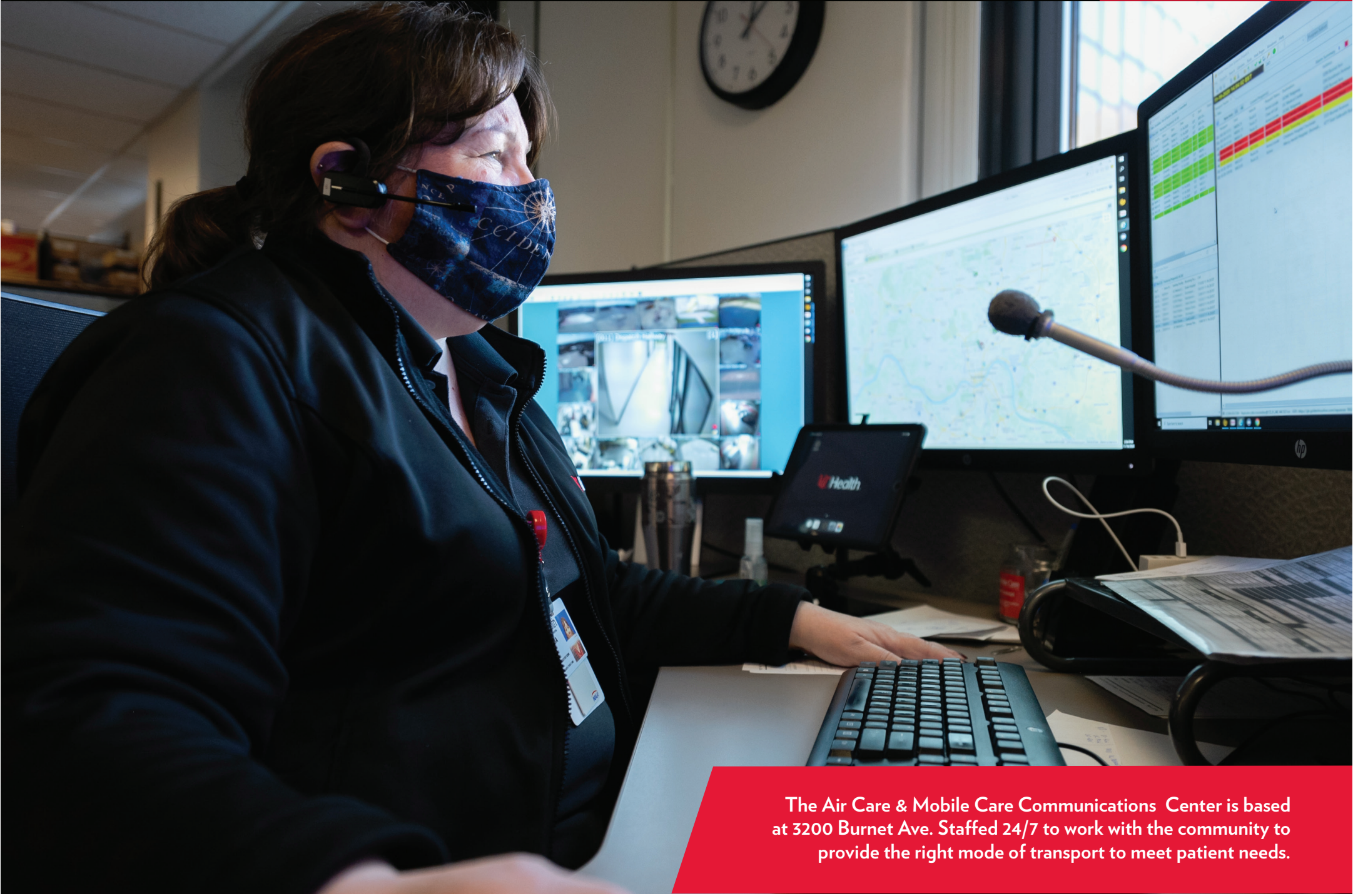
March 2021

April 2021

S	M	T	W	T	F	S
				1	2	3
4	5	6	7	8	9	10
11	12	13	14	15	16	17
18	19	20	21	22	23	24
25	26	27	28	29	30	

SUNDAY	MONDAY	TUESDAY	WEDNESDAY	THURSDAY	FRIDAY	SATURDAY
	1	2	3	4	5	6
3	3	1	2	3	1	2
7	8	9	10	11	12	13
3	1	2	3	1	2	3
Daylight Saving Time Begins 14	15	16	St. Patrick's Day 17	18	Certified NursesDay / Residency Match Day 19	First Day of Spring 20
1	2	3	1	2	3	1
21	22	23	24	25	26	Passover Begins 27
2	3	1	2	3	1	2
Palm Sunday 28	29	National Doctors Day 30	31			
3	1	2	3			





The Air Care & Mobile Care Communications Center is based at 3200 Burnet Ave. Staffed 24/7 to work with the community to provide the right mode of transport to meet patient needs.

March 2021

S	M	T	W	T	F	S
	1	2	3	4	5	6
7	8	9	10	11	12	13
14	15	16	17	18	19	20
21	22	23	24	25	26	27
28	29	30	31			

April 2021

May 2021

S	M	T	W	T	F	S
						1
2	3	4	5	6	7	8
9	10	11	12	13	14	15
16	17	18	19	20	21	22
23	24	25	26	27	28	29
30	31					

SUNDAY	MONDAY	TUESDAY	WEDNESDAY	THURSDAY	FRIDAY	SATURDAY
 Easter/ Passover Ends 4 1	5 2	6 3	7 1	1 2	Good Friday 2 2	3 3
National Public Safety Telecommunicators Week Begins 11 2	12 3	13 1	14 2	Tax Day 15 3	Good Friday Passover Begins 16 1	National Public Safety Telecommunicators Week Ends 17 2
Easter 18 3	Earth Day 19 1	20 2	Administrative Professionals Day 21 3	Earth Day 22 1	23 2	24 3
25 1	26 2	27 3	28 1	29 2	Arbor Day 30 3	





UC Health Air Care & Mobile Care thanks our EMS partners for the outstanding work they provide in the community.

April 2021						
S	M	T	W	T	F	S
				1	2	3
4	5	6	7	8	9	10
11	12	13	14	15	16	17
18	19	20	21	22	23	24
25	26	27	28	29	30	

# May 2021

June 2021						
S	M	T	W	T	F	S
		1	2	3	4	5
6	7	8	9	10	11	12
13	14	15	16	17	18	19
20	21	22	23	24	25	26
27	28	29	30			

SUNDAY	MONDAY	TUESDAY	WEDNESDAY	THURSDAY	FRIDAY	SATURDAY
						1
						1
National Hospital Week Begins 2	3	4	5	National Nurses Week Begins 6	7	National Hospital Week Ends 8
2	3	1	2	3	1	2
Mother's Day 9	10	11	National Nurses Week Ends 12	13	14	15
3	1	2	3	1	2	3
National EMS Week Begins 16	17	18	19	20	21	National EMS Week Ends 22
1	2	3	1	2	3	1
23	24	25	26	27	28	29
2	3					
30	Memorial Day 31					
3	1	1	2	3	1	2





UC Health Air Care & Mobile Care has 16 ambulances that are based at 3200 Burnet Ave, Daniel Drake Center for Post-Acute Care, West Chester Hospital and Norwood, Ohio, with response to anywhere in the region.

May 2021						
S	M	T	W	T	F	S
						1
2	3	4	5	6	7	8
9	10	11	12	13	14	15
16	17	18	19	20	21	22
23	24	25	26	27	28	29
30	31					

# June 2021

July 2021						
S	M	T	W	T	F	S
				1	2	3
4	5	6	7	8	9	10
11	12	13	14	15	16	17
18	19	20	21	22	23	24
25	26	27	28	29	30	31

SUNDAY	MONDAY	TUESDAY	WEDNESDAY	THURSDAY	FRIDAY	SATURDAY
		1	2	3	4	5
		2	3	1	2	3
6	7	8	9	10	11	12
1	2	3	1	2	3	1
13	Flag Day World Blood Donation Day14	15	16	17	18	19
2	3	1	2	3	1	2
Father's Day First Day of Summer20	21	22	23	24	25	26
3	1	2	3	1	2	3
27	28	29	30			
1	2	3	1			





Air Care’s crew configuration is unique to only four programs in the U.S. It consists of an emergency medicine physician or an acute care nurse practitioner on every flight and a critical care-trained nurse. This crew configuration allows us to bring the care of the region’s only academic medical center to the patient. It allows us to deliver the highest quality of care to patients in the region.

June 2021

S	M	T	W	T	F	S
		1	2	3	4	5
6	7	8	9	10	11	12
13	14	15	16	17	18	19
20	21	22	23	24	25	26
27	28	29	30			

July 2021

August 2021

S	M	T	W	T	F	S
1	2	3	4	5	6	7
8	9	10	11	12	13	14
15	16	17	18	19	20	21
22	23	24	25	26	27	28
29	30	31				

SUNDAY	MONDAY	TUESDAY	WEDNESDAY	THURSDAY	FRIDAY	SATURDAY
				1	2	3
				2	3	1
Independence Day 4	5	6	7	8	9	10
2	3	1	2	3	1	2
11	12	13	14	15	16	17
3	1	2	3	1	2	3
18	19	20	21	22	23	24
1	2	3	1	2	3	1
25	26	27	28	29	30	31
2	3	1	2	3	1	2





Photo Credit: Dan Manga

UC Health's Air Care helicopters are  
operated by Metro Aviation.

July 2021

S	M	T	W	T	F	S
				1	2	3
4	5	6	7	8	9	10
11	12	13	14	15	16	17
18	19	20	21	22	23	24
25	26	27	28	29	30	31

September 2021

S	M	T	W	T	F	S
			1	2	3	4
5	6	7	8	9	10	11
12	13	14	15	16	17	18
19	20	21	22	23	24	25
26	27	28	29	30		

August 2021

SUNDAY	MONDAY	TUESDAY	WEDNESDAY	THURSDAY	FRIDAY	SATURDAY
1	2	3	4	5	6	7
3	1	2	3	1	2	3
8	9	10	11	12	13	14
1	2	3	1	2	3	1
World Helicopter Day 15	16	17	18	National Aviation Day 19	20	21
2	3	1	2	3	1	2
22	Health Unit Coordinators Day 23	24	25	26	27	28
3	1	2	3	1	2	3
29	30	31				
1	2	3				





Critical care capabilities aboard every UC Health Mobile Intensive Care Unit include: ECMO, LVAD, IABP, Impella, advanced ventilator management, en-route lab diagnostics and advanced monitoring. Bringing the power of the region’s only academic medicine to the patient.

August 2021

S	M	T	W	T	F	S
1	2	3	4	5	6	7
8	9	10	11	12	13	14
15	16	17	18	19	20	21
22	23	24	25	26	27	28
29	30	31				

September 2021

October 2021

S	M	T	W	T	F	S
					1	2
3	4	5	6	7	8	9
10	11	12	13	14	15	16
17	18	19	20	21	22	23
24	25	26	27	28	29	30
31						

SUNDAY	MONDAY	TUESDAY	WEDNESDAY	THURSDAY	FRIDAY	SATURDAY
			1	2	3	4
	Labor Day					Patriot Day
5	6	7	8	9	10	11
2	3	1	2	3	1	2
12	13	14	15	16	17	18
3	1	2	3	1	2	3
19	20	21	First Day of Fall	22	23	24
1	2	3	1	2	3	1
26	27	28	29	30		
2	3	1	2	3		





The region's first Mobile Stroke Unit, a vehicle specially designed to provide immediate care for the patients suffering from a possible stroke. Our Mobile Stroke Unit is the only one of its kind in the region that includes a paramedic, EMT, a critical care registered nurse and a CT technologist on board with a stroke team physician available through a telemedicine video link.

September 2021						
S	M	T	W	T	F	S
			1	2	3	4
5	6	7	8	9	10	11
12	13	14	15	16	17	18
19	20	21	22	23	24	25
26	27	28	29	30		

October 2021

November 2021						
S	M	T	W	T	F	S
	1	2	3	4	5	6
7	8	9	10	11	12	13
14	15	16	17	18	19	20
21	22	23	24	25	26	27
28	29	30				

SUNDAY	MONDAY	TUESDAY	WEDNESDAY	THURSDAY	FRIDAY	SATURDAY
					1	2
Fire Prevention Week Begins 3	4	5	6	7	8	Fire Prevention Week Ends 9
3	1	2	3	1	2	3
10	Columbus Day 11	Emergency Nurses Week Begins 12	13	14	Boss's Day 15	16
1	2	3	1	2	3	1
17	Emergency Nurses Week Ends 18	19	20	21	22	23
2	3	1	2	3	1	2
Respiratory Care Week Begins 24	25	26	27	National First Responders Day 28	World Stroke Day 29	Respiratory Care Week Ends 30
Halloween 31						
1	1	2	3	1	2	3





Air Care & Mobile Care has provided Greater Cincinnati with specialized medical transport services for patients in our community for 37 years. We bring the world-class care of UC Medical Center to the patient through advanced transport medicine.

October 2021

S	M	T	W	T	F	S
					1	2
3	4	5	6	7	8	9
10	11	12	13	14	15	16
17	18	19	20	21	22	23
24	25	26	27	28	29	30
31						

December 2021

S	M	T	W	T	F	S
			1	2	3	4
5	6	7	8	9	10	11
12	13	14	15	16	17	18
19	20	21	22	23	24	25
26	27	28	29	30	31	

November 2021

SUNDAY	MONDAY	TUESDAY	WEDNESDAY	THURSDAY	FRIDAY	SATURDAY
	Air Care & Mobile Care 37th Anniversary 1	Election Day 2	3	4	5	6
	2	3	1	2	3	1
Daylight Saving Time Ends/ National Nurse Practitioner Week Begins 7	8	9	10	Veterans Day 11	12	National Nurse Practitioner Week Ends 13
2	3	1	2	3	1	2
14	15	16	17	18	19	20
3	1	2	3	1	2	3
21	22	23	24	Thanksgiving Day 25	26	27
1	2	3	1	2	3	1
Hanukkah Begins 28	29	30				
2	3	1				





Happy Holidays from your  
friends at UC Health Air  
Care & Mobile Care!

November 2021						
S	M	T	W	T	F	S
	1	2	3	4	5	6
7	8	9	10	11	12	13
14	15	16	17	18	19	20
21	22	23	24	25	26	27
28	29	30				

December 2021

January 2022						
S	M	T	W	T	F	S
						1
2	3	4	5	6	7	8
9	10	11	12	13	14	15
16	17	18	19	20	21	22
23	24	25	26	27	28	29
30	31					

SUNDAY	MONDAY	TUESDAY	WEDNESDAY	THURSDAY	FRIDAY	SATURDAY
			1	2	3	4
			2	3	1	2
5	Hanukkah Ends6	7	8	9	10	11
3	1	2	3	1	2	3
12	13	14	15	16	17	18
1	2	3	1	2	3	1
19	20	First Day of Winter21	22	23	24	Christmas Day25
2	3	1	2	3	1	2
26	27	28	29	30	31	
3	1	2	3	1	2	